

## Persona – Install on Windows Vista(64-bit) with Internet Explorer 7

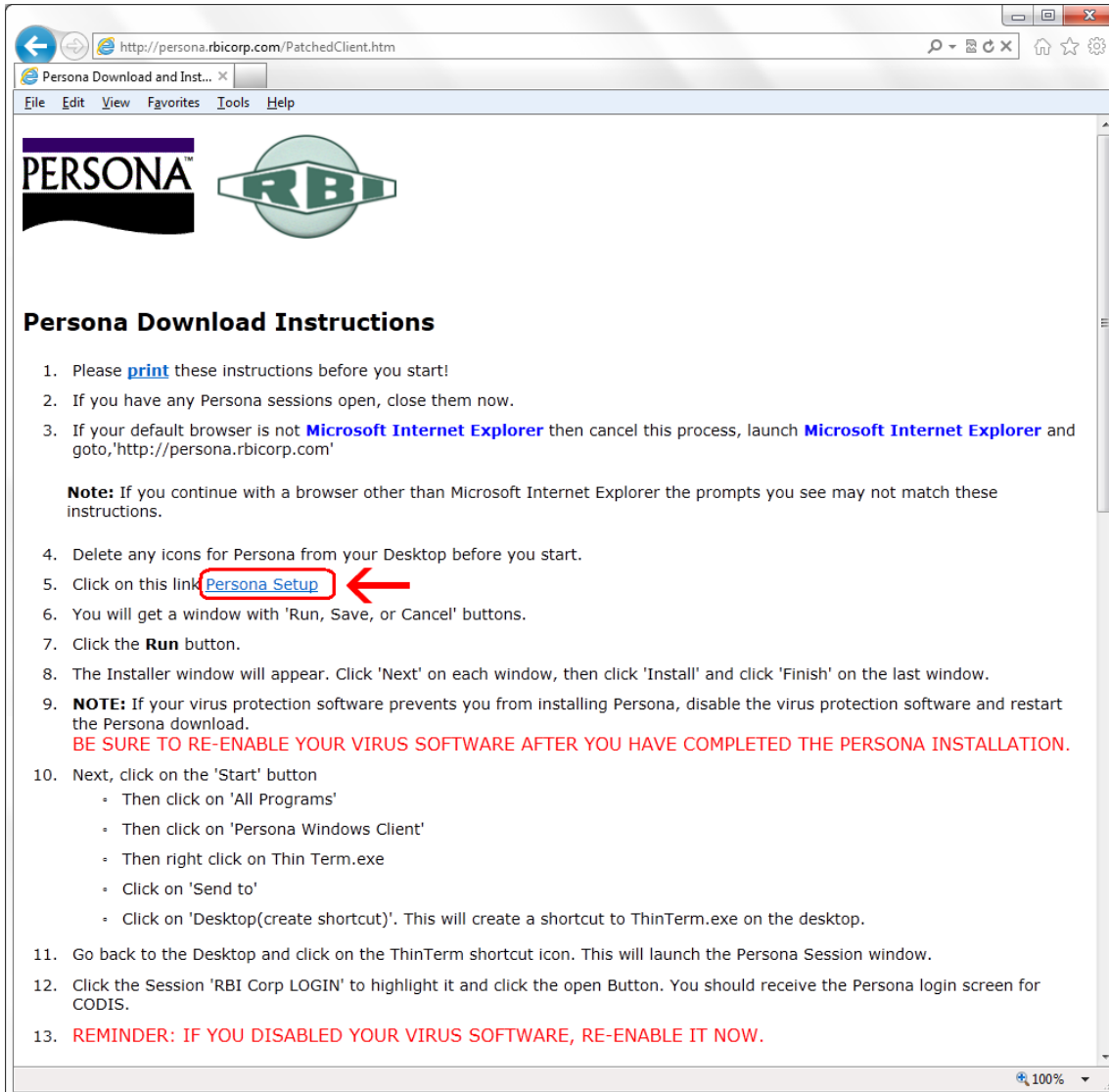
11/14/2011


\*\*\*Make sure that you perform this install from Internet Explorer - screens may vary

\*\*\*Disable your virus scan software and other firewalls for this installation

\*\*\*You must have Administrator rights to install this & close any open Persona sessions

Go to <http://persona.rbicorp.com> and read/print the instructions and then click on **Persona Setup**.



**PERSONA** 

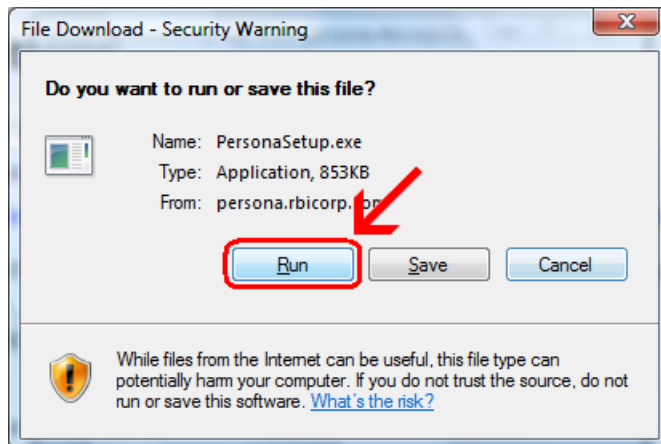
### Persona Download Instructions

1. Please [print](#) these instructions before you start!
2. If you have any Persona sessions open, close them now.
3. If your default browser is not **Microsoft Internet Explorer** then cancel this process, launch **Microsoft Internet Explorer** and goto, 'http://persona.rbicorp.com'

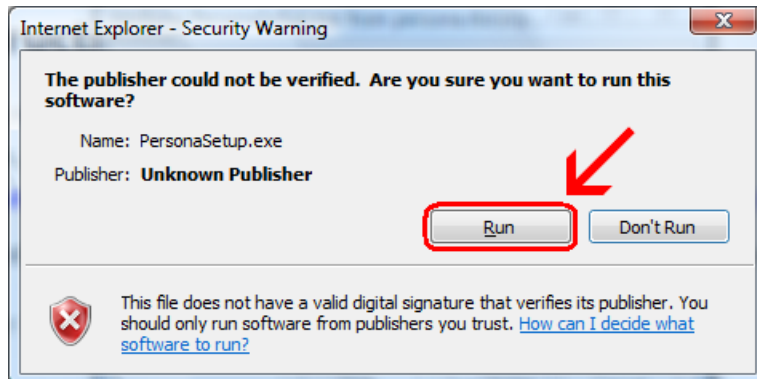
**Note:** If you continue with a browser other than Microsoft Internet Explorer the prompts you see may not match these instructions.

4. Delete any icons for Persona from your Desktop before you start.
5. Click on this link [Persona Setup](#)
6. You will get a window with 'Run, Save, or Cancel' buttons.
7. Click the **Run** button.
8. The Installer window will appear. Click 'Next' on each window, then click 'Install' and click 'Finish' on the last window.
9. **NOTE:** If your virus protection software prevents you from installing Persona, disable the virus protection software and restart the Persona download.  
**BE SURE TO RE-ENABLE YOUR VIRUS SOFTWARE AFTER YOU HAVE COMPLETED THE PERSONA INSTALLATION.**
10. Next, click on the 'Start' button
  - Then click on 'All Programs'
  - Then click on 'Persona Windows Client'
  - Then right click on Thin Term.exe
  - Click on 'Send to'
  - Click on 'Desktop(create shortcut)'. This will create a shortcut to ThinTerm.exe on the desktop.
11. Go back to the Desktop and click on the ThinTerm shortcut icon. This will launch the Persona Session window.
12. Click the Session 'RBI Corp LOGIN' to highlight it and click the open Button. You should receive the Persona login screen for CODIS.
13. **REMINDER: IF YOU DISABLED YOUR VIRUS SOFTWARE, RE-ENABLE IT NOW.**

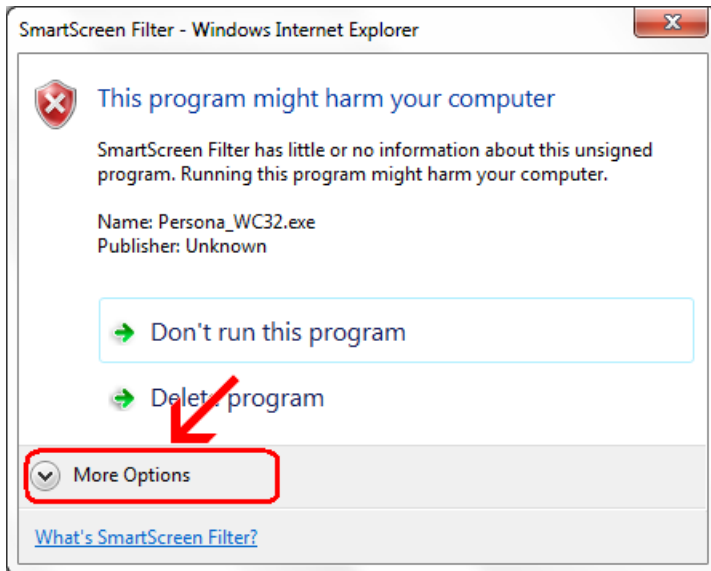
Click on **Run**



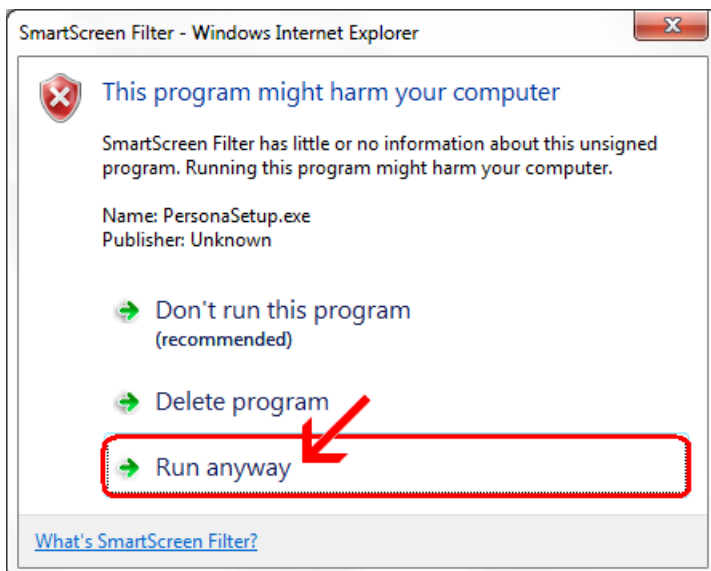
Click **Run**



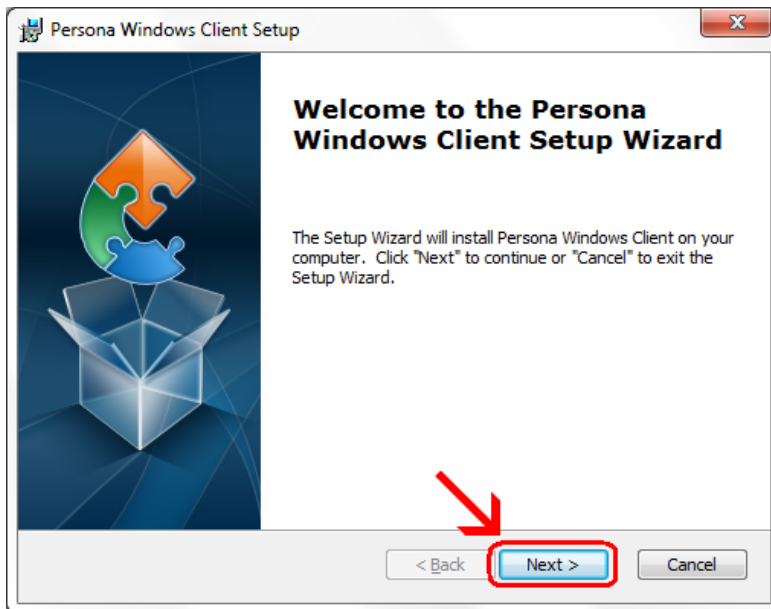
If you have **SmartScreen Filter** turned on, you will see the next two windows. When they pop up, you may have to click on **More Actions** otherwise click on **Run Anyway**



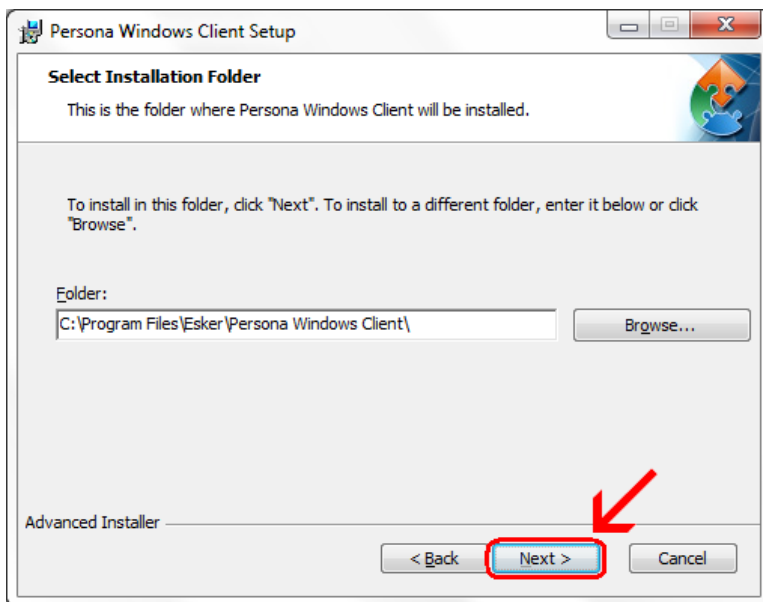
Click on **Run Anyway**



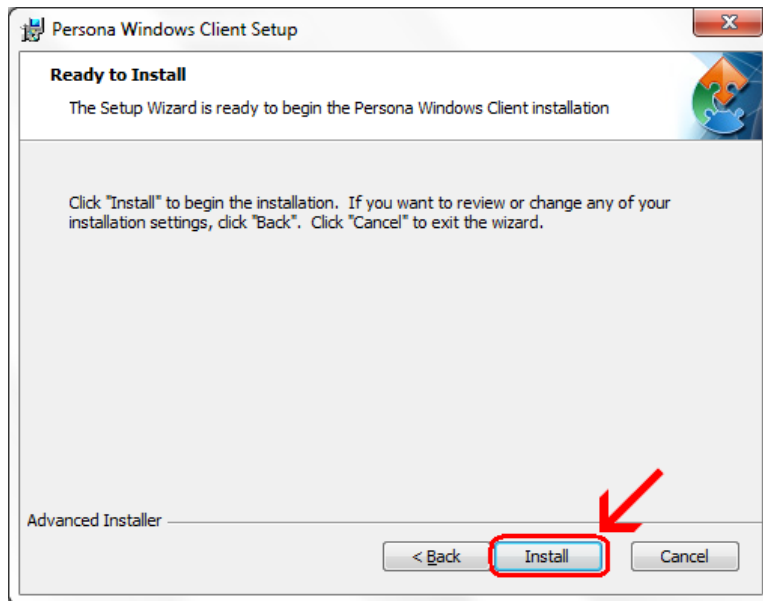
Click **Next**



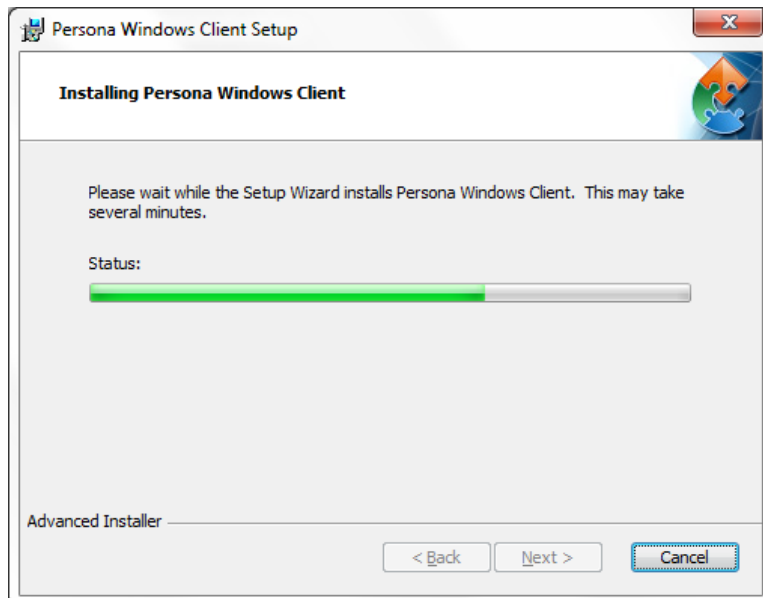
Click **Next**



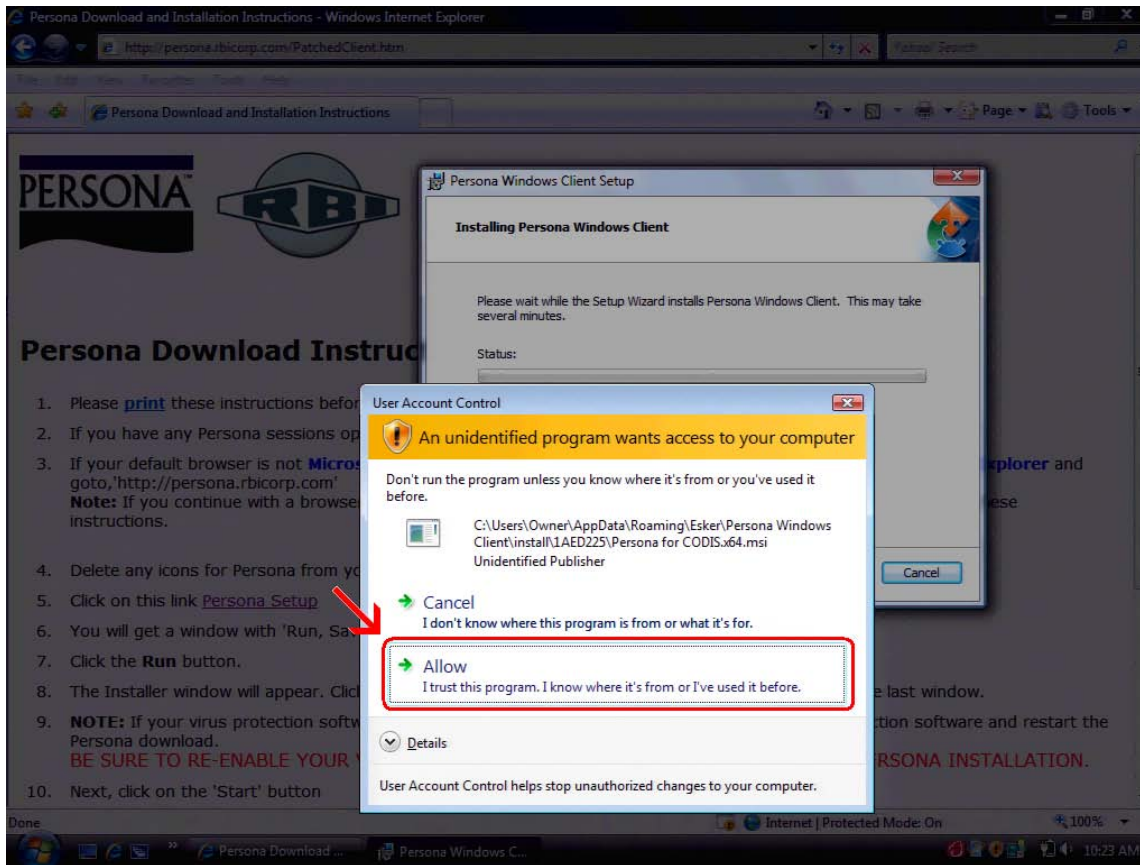
## Click **Install**



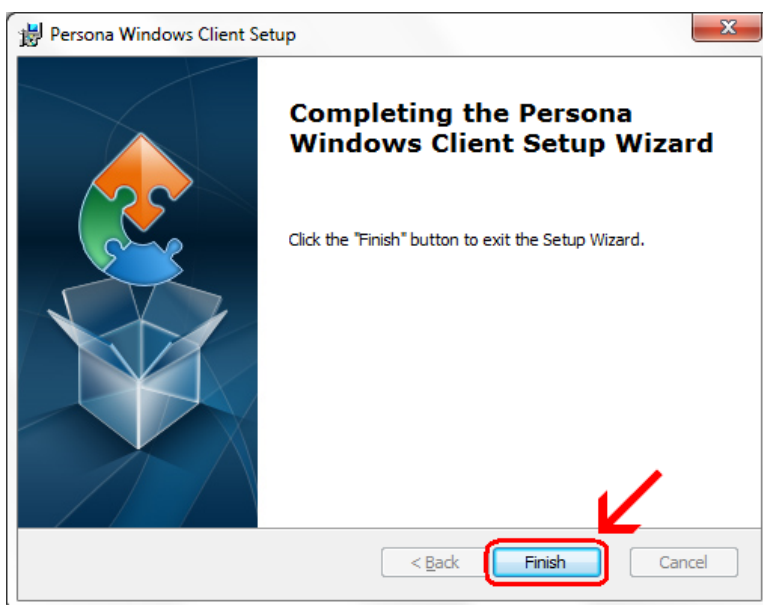
**Wait** for the installation to complete (takes less than 1 minute)



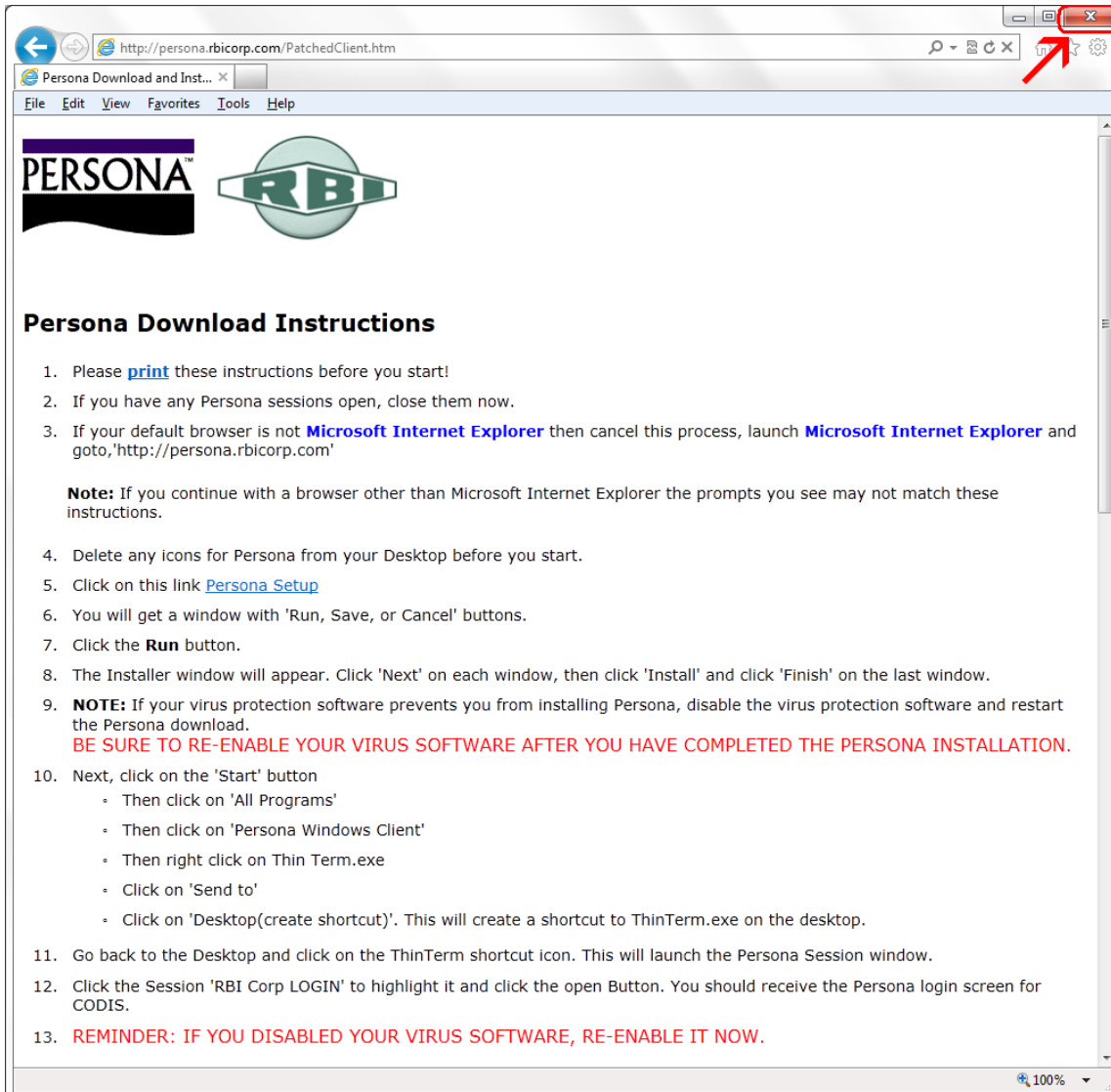
If your screen goes dim and a window pops up about “An unidentified program wants access to your computer” click on **Allow**



Click **Finish**




This window is left open on your screen. You can just **close** this.



Persona Download and Inst... x

File Edit View Favorites Tools Help

**PERSONA™** 

### Persona Download Instructions

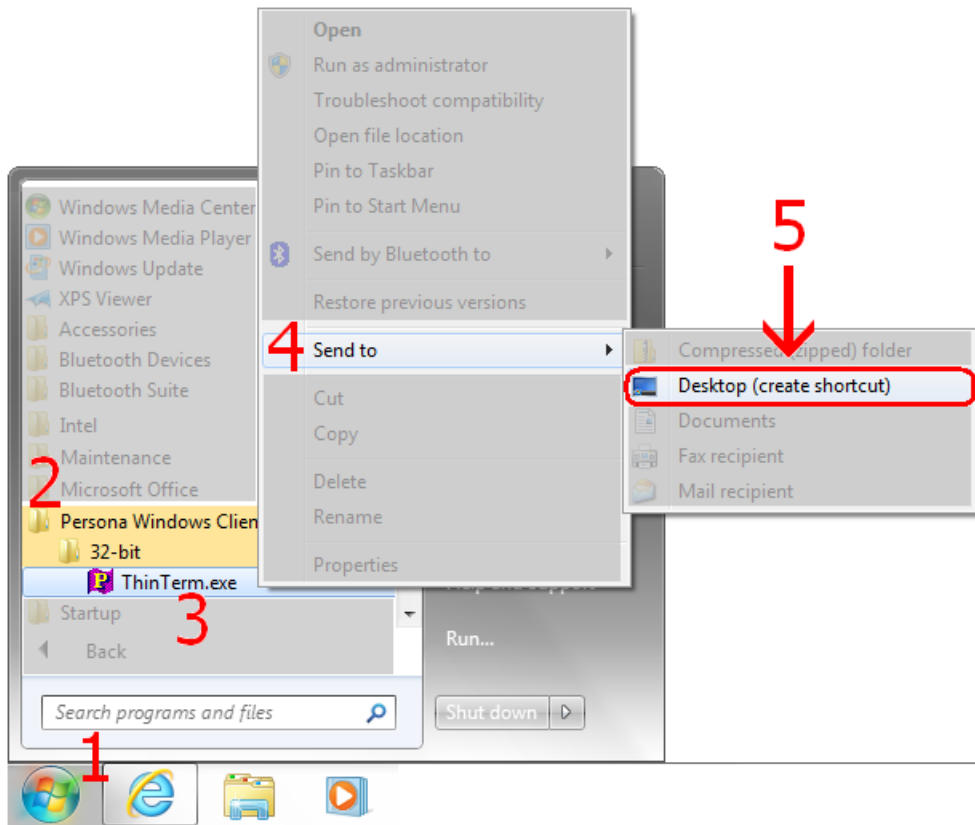
1. Please [print](#) these instructions before you start!
2. If you have any Persona sessions open, close them now.
3. If your default browser is not **Microsoft Internet Explorer** then cancel this process, launch **Microsoft Internet Explorer** and goto, 'http://persona.rbicorp.com'

**Note:** If you continue with a browser other than Microsoft Internet Explorer the prompts you see may not match these instructions.

4. Delete any icons for Persona from your Desktop before you start.
5. Click on this link [Persona Setup](#)
6. You will get a window with 'Run, Save, or Cancel' buttons.
7. Click the **Run** button.
8. The Installer window will appear. Click 'Next' on each window, then click 'Install' and click 'Finish' on the last window.
9. **NOTE:** If your virus protection software prevents you from installing Persona, disable the virus protection software and restart the Persona download.  
**BE SURE TO RE-ENABLE YOUR VIRUS SOFTWARE AFTER YOU HAVE COMPLETED THE PERSONA INSTALLATION.**
10. Next, click on the 'Start' button
  - Then click on 'All Programs'
  - Then click on 'Persona Windows Client'
  - Then right click on Thin Term.exe
  - Click on 'Send to'
  - Click on 'Desktop(create shortcut)'. This will create a shortcut to ThinTerm.exe on the desktop.
11. Go back to the Desktop and click on the ThinTerm shortcut icon. This will launch the Persona Session window.
12. Click the Session 'RBI Corp LOGIN' to highlight it and click the open Button. You should receive the Persona login screen for CODIS.
13. **REMINDER: IF YOU DISABLED YOUR VIRUS SOFTWARE, RE-ENABLE IT NOW.**

100%

Click on Start Button → All Programs → Persona Windows Client  
Then **right click** on **ThinTerm.exe**  
Click on **Send To** then click on **Desktop (create shortcut)**



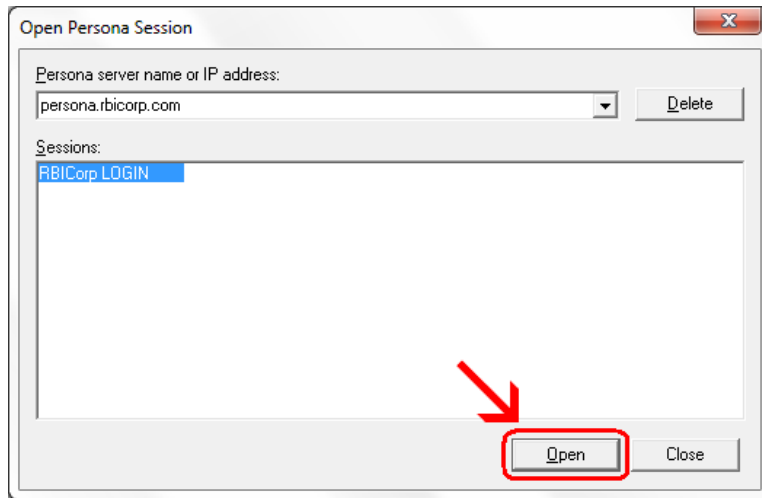
Now **double click** on the new icon on your desktop



ThinTerm.exe



If it is not already in the top box, **type in persona.rbicorp.com** and **hit Enter on the keyboard**. Then click on **RBICorp LOGIN** once to highlight it and then click on **Open**



This will connect to the Persona server and prompt you for a username and a password.